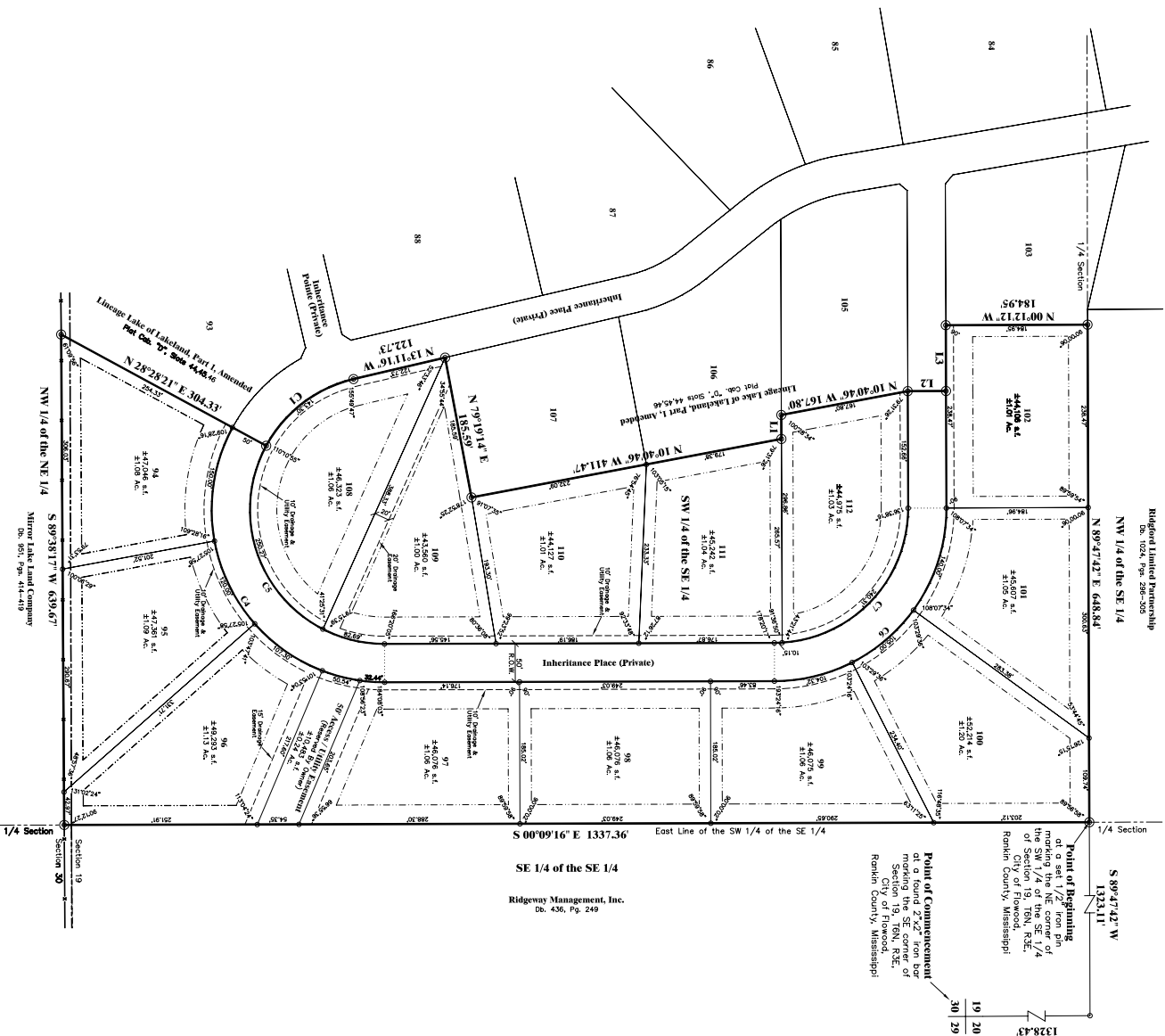


# LINEAGE LAKE OF LAKEBLAND, PART 3

Situated in the SW 1/4 of the SE 1/4 of Section 19  
 and the NW 1/4 of the NE 1/4 of Section 30, T6N, R3E,  
 City of Flowood, Rankin County, Mississippi



Ridgeway Limited Partnership  
 De. 436, Pg. 249-250

NW 1/4 of the SE 1/4

S 89°47'42" W  
 1323.11'

Point of Beginning  
 at a set 1/2" iron pin  
 marking the NE corner of  
 the SW 1/4 of the SE 1/4  
 of Section 19, T6N, R3E,  
 City of Flowood,  
 Rankin County, Mississippi

SE 1/4 of the SE 1/4  
 East Line of the SW 1/4 of the SE 1/4  
 S 00°09'16" E 1337.36'

Ridgeway Management, Inc.  
 De. 436, Pg. 249

**MATHEMATICAL CLOSURE:**  
 Figure Name: Lineage Lake of Lakeland, Part 3  
 Course: S 89°47'42" W Distance: 1337.36  
 Course: S 89°38'17" W Distance: 639.67  
 Course: S 89°47'42" W Distance: 639.67  
 Arc Length: 47.62' Chord: 28.21' Radius: 175.00  
 Course: N 13°11'16" W Distance: 122.73  
 Course: N 10°40'46" W Distance: 100.00  
 Course: S 89°47'42" W Distance: 411.47  
 Course: N 00°12'12" W Distance: 512.50  
 Course: N 00°12'12" W Distance: 500.00  
 Course: S 89°47'42" W Distance: 428.59  
 Course: N 89°47'42" E Distance: 648.84  
 Perimeter: 4317.50  
 Area: 72896.44  
 Magnetic Closure = (Units listed courses & 0.000 Units)  
 Error of Closure: 0.003  
 Precision: 1: 57,953,000

**BOUNDARY LINE TABLE**

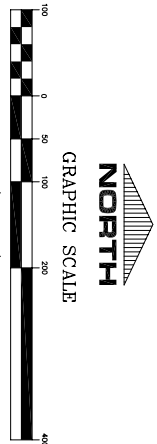
Line	Bearing	Length
L1	S 89°47'42" W	31.50'
L2	N 00°12'12" W	50.00'
L3	S 89°47'42" W	63.81'

**BOUNDARY CURVE TABLE**

Curve	Delta	Length	Radius	Tangent	Chord	Ch. Brg.
C1	46°02'22"	147.66'	175.00'	78.84'	143.31'	N 37°21'27" W

**BOUNDARY CURVE TABLE**

Curve	Delta	Length	Radius	Tangent	Chord	Ch. Brg.
C4	118°37'20"	468.65'	225.00'	379.15'	588.92'	N 59°02'31" E
C5	118°37'20"	369.33'	175.00'	294.90'	500.92'	N 49°04'51" E
C6	90°02'54"	358.66'	225.00'	225.00'	318.33'	N 49°04'51" E
C7	90°02'54"	273.04'	175.00'	175.15'	242.99'	N 49°04'51" W



- GENERAL NOTES:**
- ALL LOTS IN THIS SUBDIVISION ARE LOCATED IN FLOOD ZONE "X" ACCORDING TO FLOOD INSURANCE RATE MAP COMMUNITY PANEL NUMBER 2003 E & 280289 0194 E DATED NOVEMBER 29, 2003
  - BASED ON THE ANNUAL STANDARDS FOR LAND SURVEYING IN THE STATE OF MISSISSIPPI AS ESTABLISHED BY THE MISSISSIPPI STATE BOARD OF SURVEYING AND PROFESSIONAL ENGINEERS AND LAND SURVEYORS.
  - DENOTES 10' DRAINAGE & UTILITY EASEMENTS UNLESS OTHERWISE NOTED.
  - ALL MEASUREMENTS OF CURVES ARE CHORD LENGTH DISTANCES.
  - ALL LOTS IN LINEAGE LAKE OF LAKEBLAND, PART 3 HAVE A FRONT CORNER LOT SETBACK OF 35' OF 25' 50% SETBACK OF 15' AND